

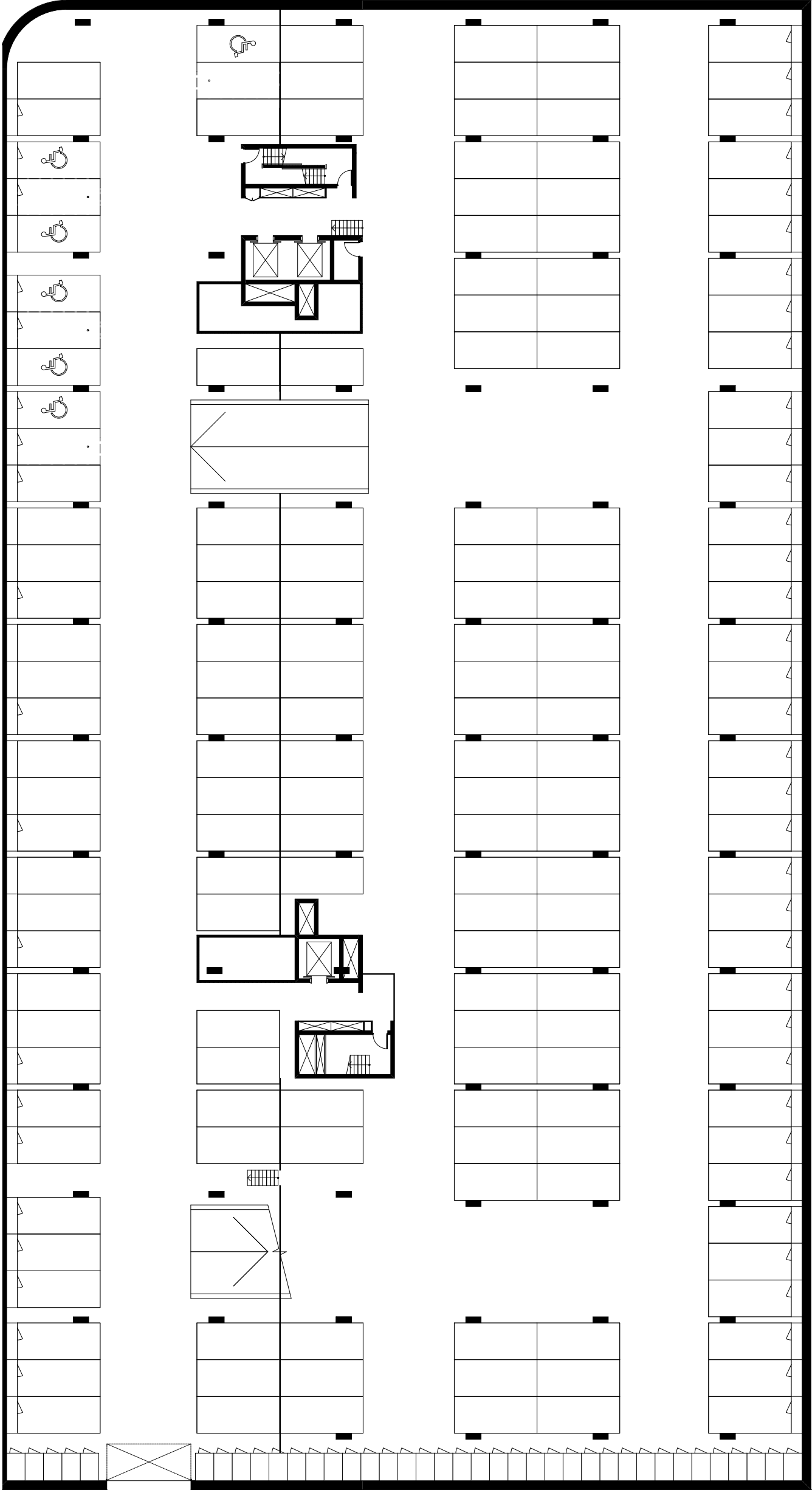
# OWN THE CITY

## METROPOL

AINSLIE AVENUE

COOYONG STREET

KOOGARAH LANE



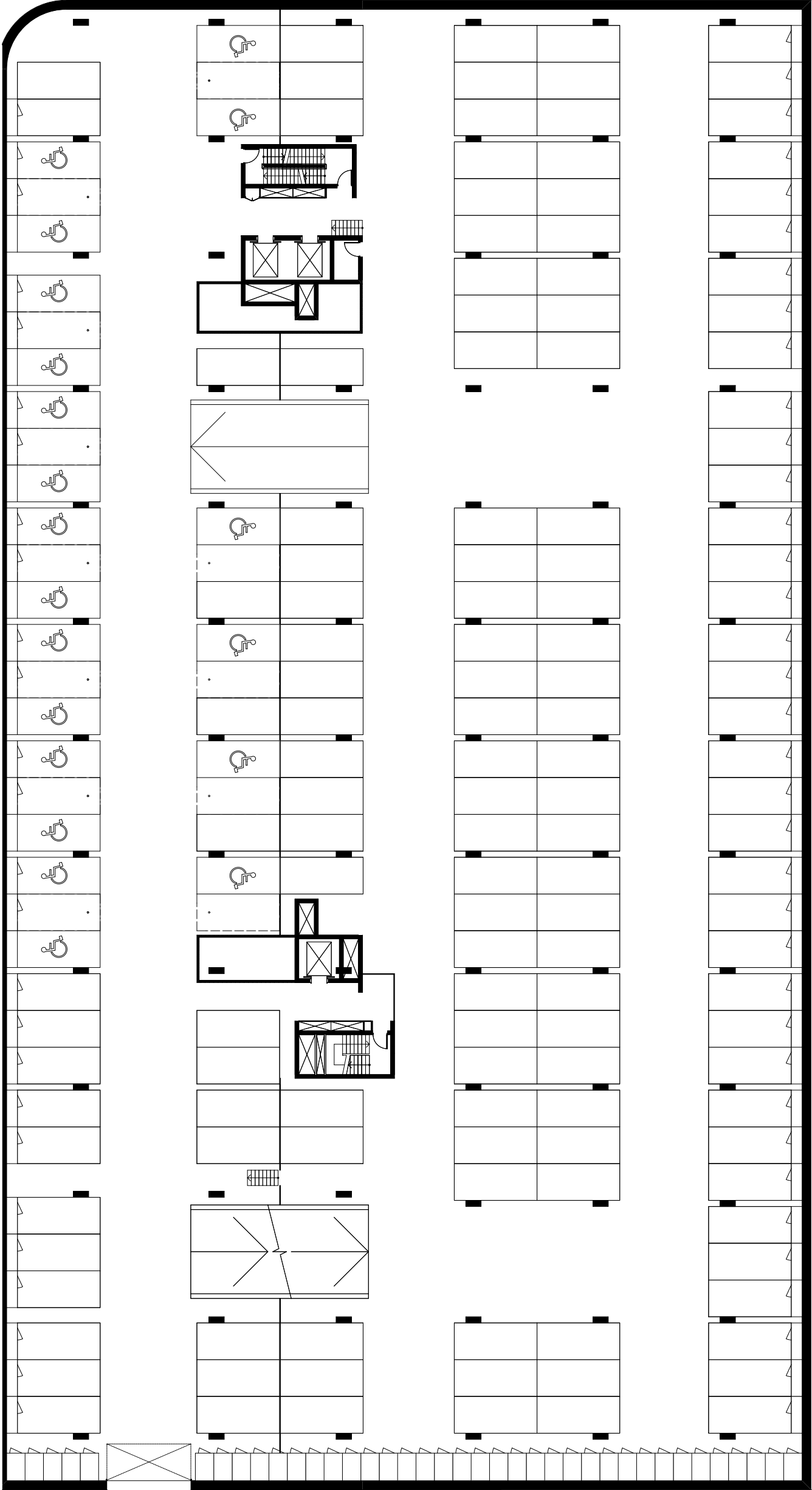
# OWN THE CITY

## METROPOL

AINSLIE AVENUE

COOYONG STREET

KOOGARAH LANE



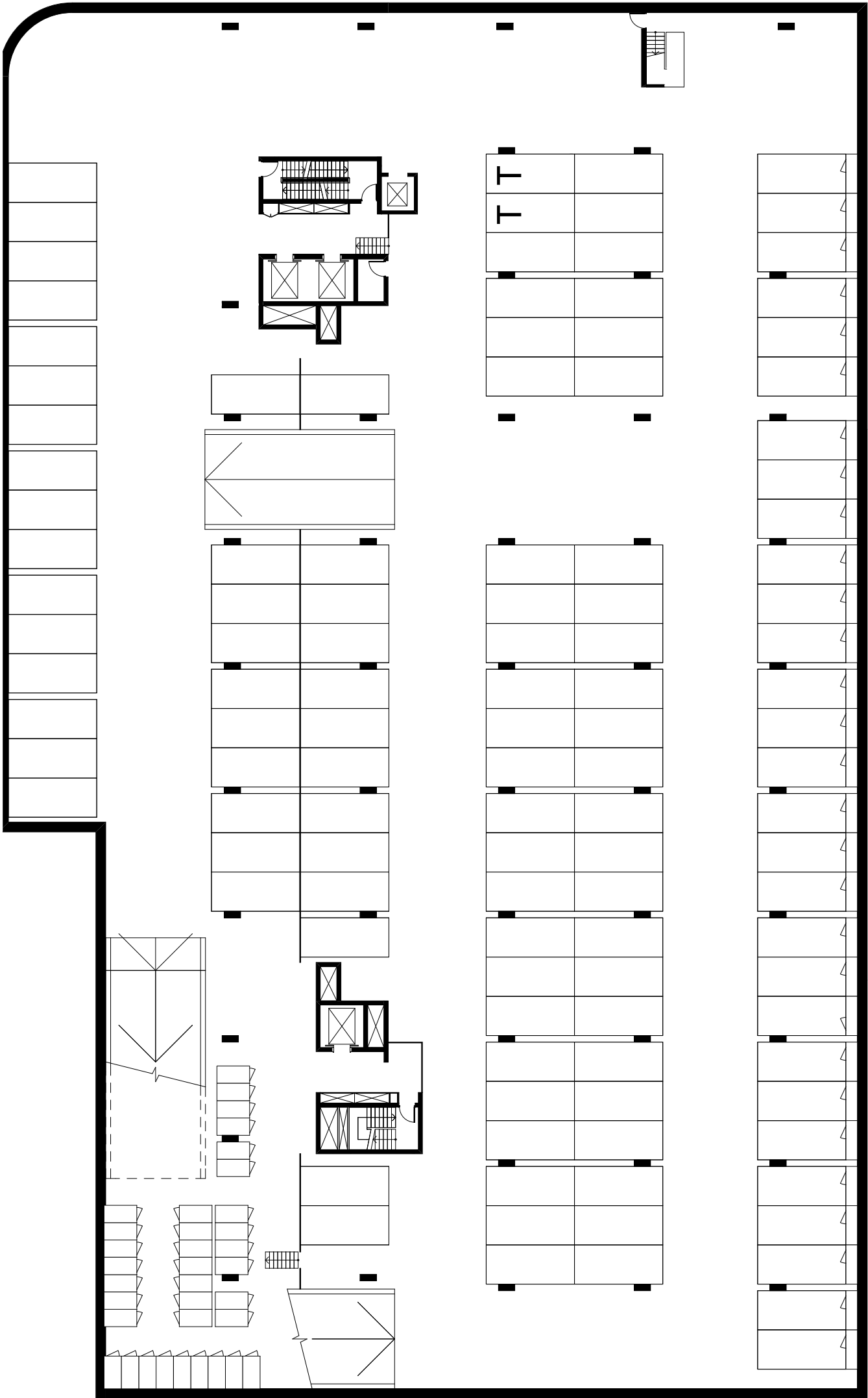
# OWN THE CITY

## METROPOL

AINSLIE AVENUE

COOYONG STREET

KOOGARAH LANE



DWG NO

MK0999

DWG TITLE

BASEMENT 01  
MKT FLOOR PLAN

REVISION

REV. 02

DATE

14.05.2018

BIM Server: Blimserver9 - BIM Server 20/17064 Geocon Reid/17064 General DA PRINT DATE: 15.05.2018

0 M 10 M



Whilst we endeavour to ensure the contents of these plans are correct at the time of printing, the information they contain is to be used as a guide only. Furnishings and floor coverings are for illustrative purposes only, are not shown to scale nor included in the stated price (unless expressly included). The columns shown may vary in diameter throughout the Building. All areas are provided in accordance with the Method of Measurement for Residential Property provided by the Property Council of Australia. The plans were completed prior to the completion of final design, engineering and construction of the Building, therefore design, engineering, dimensions, fittings, finishes and specifications are subject to change without notice in accordance with the provisions of the Contract of Sale.



# OWN THE CITY

## METROPOL

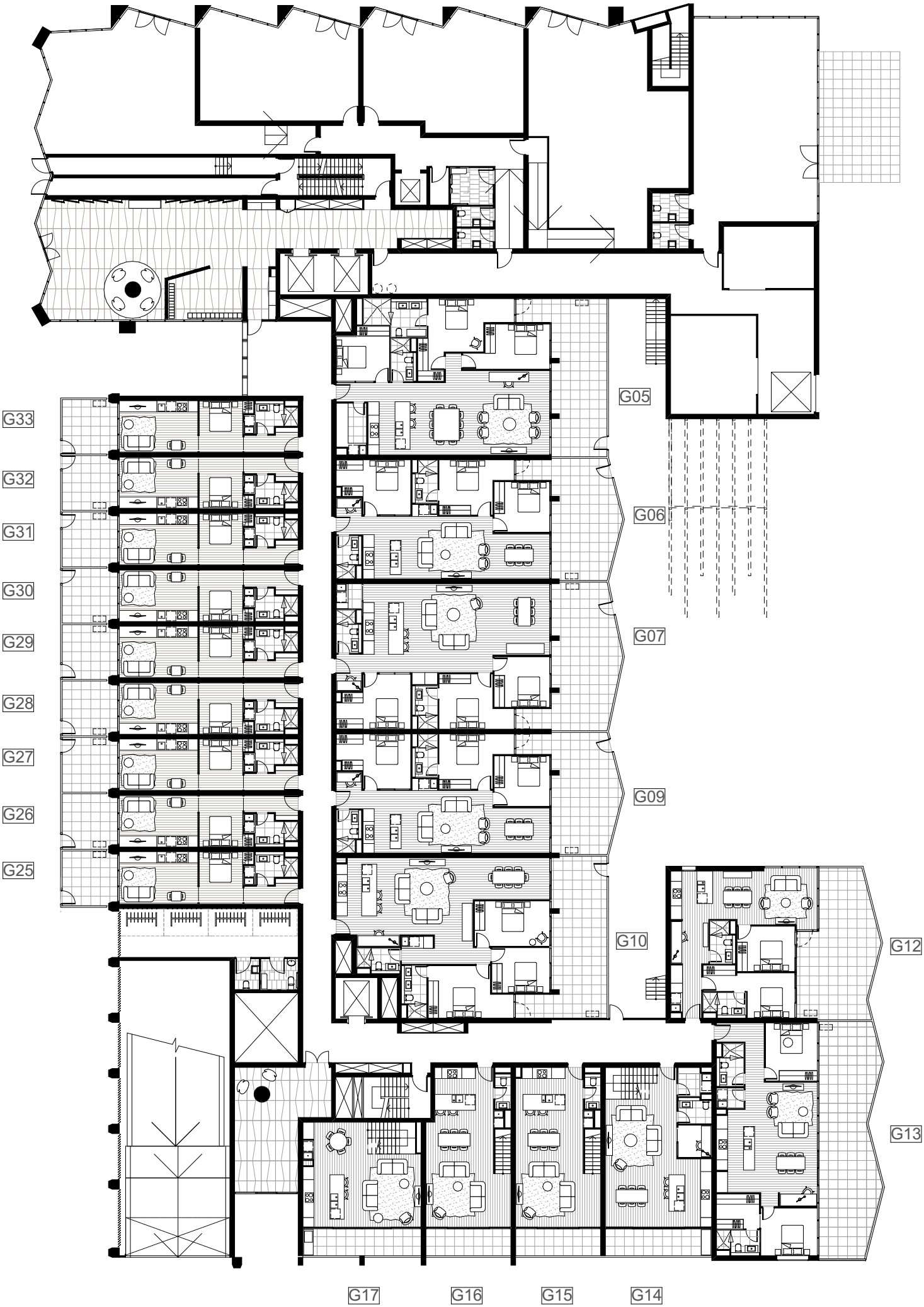
AINSLIE AVENUE

C01

C02

C03

C04



COOYONG STREET

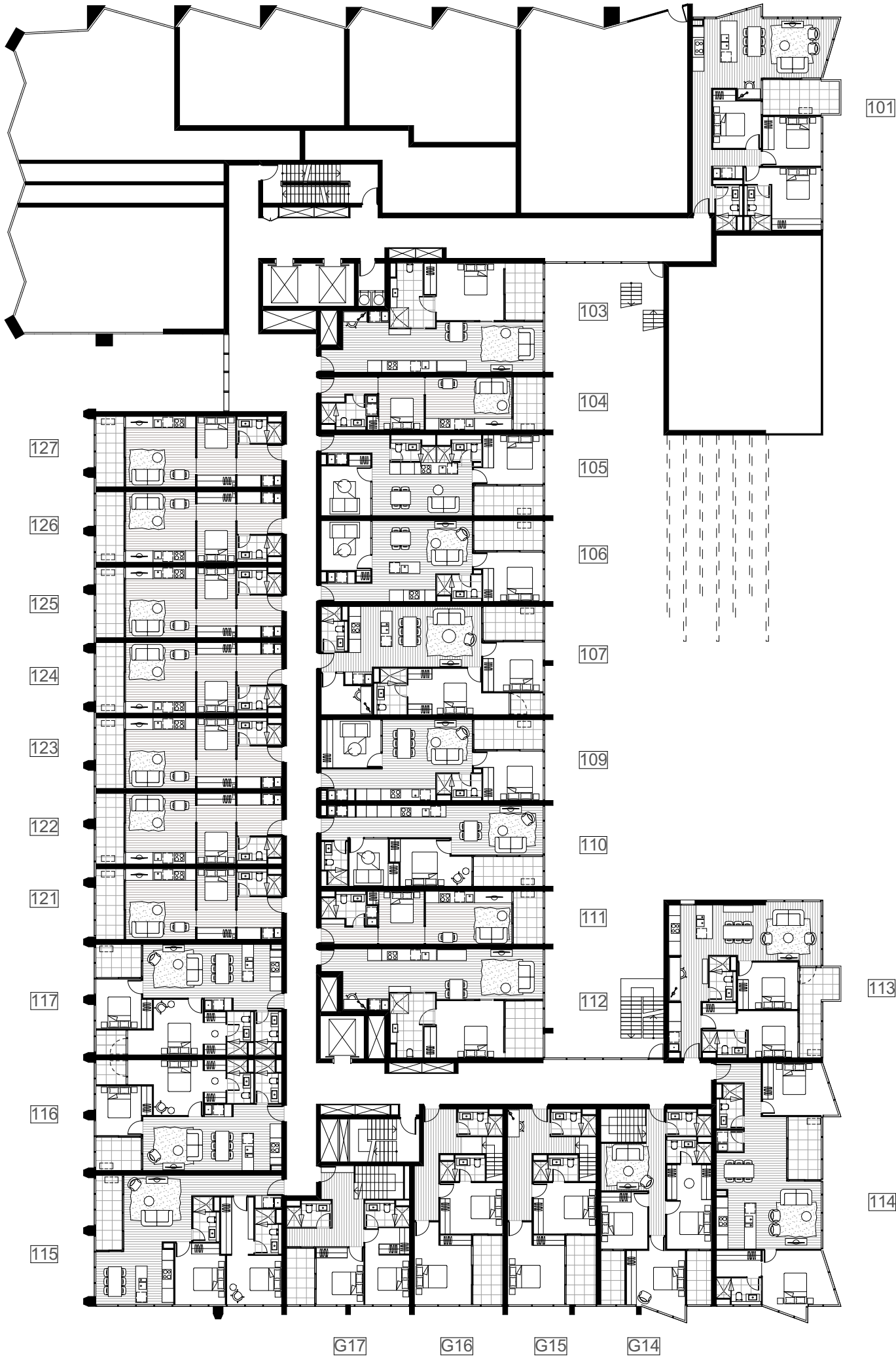
KOOGARAH LANE



# OWN THE CITY

METROPOL

AINSLIE AVENUE



# OWN THE CITY

## METROPOL

AINSLIE AVENUE

201

202

203

204

205

234

233

232

206

207

208

209

240

239

230

238

237

236

235

226

225

224

210

211

212

214

215

216

217

218

219

223

222

221

220

COOYONG STREET

KOOGARAH LANE





# OWN THE CITY

## METROPOL

AINSLIE AVENUE

301

302

303

304

305

334

333

332

306

307

308

309

340

339

330

338

337

336

335

326

325

324

310

311

312

314

315

316

317

318

319

323

322

321

320

COOYONG STREET

KOOGARAH LANE



# OWN THE CITY

## METROPOL

AINSLIE AVENUE

401

402

403

404

405

434

433

432

406

407

408

409

440

439

410

430

411

438

412

437

414

436

415

435

416

426

417

418

425

419

424

423

422

421

420

COOYONG STREET

KOOGARAH LANE





# OWN THE CITY

## METROPOL

AINSLIE AVENUE

501

502

503

527

526

525

504

505

506

507

508

510

511

512

513

516

514

532

523

531

530

529

528

519

518

517

COOYONG STREET

KOOGARAH LANE

DWG NO

MK1005

DWG TITLE

LEVEL 5  
MKT FLOOR PLAN

REVISION

REV. 02

DATE

14.05.2018

BIM Server: Bimserver9 - BIM Server 20/17064 Geocon Reid/17064 General DA PRINT DATE: 15.05.2018

0 M 10 M



Whilst we endeavour to ensure the contents of these plans are correct at the time of printing, the information they contain is to be used as a guide only. Furnishings and floor coverings are for illustrative purposes only, are not shown to scale nor included in the stated price (unless expressly included). The columns shown may vary in diameter throughout the Building. All areas are provided in accordance with the Method of Measurement for Residential Property provided by the Property Council of Australia. The plans were completed prior to the completion of final design, engineering and construction of the Building, therefore design, engineering, dimensions, fittings, finishes and specifications are subject to change without notice in accordance with the provisions of the Contract of Sale.

# OWN THE CITY

## METROPOL

AINSLIE AVENUE

601

602

603

629

628

627

604

605

634

625

633

632

631

630

621

620

619

607

608

609

611

612

613

615

616

618

617

COOYONG STREET

KOOGARAH LANE

DWG NO

MK1006

DWG TITLE  
LEVEL 6 MKT  
FLOOR PLAN

REVISION  
REV. 02

DATE  
14.05.2018

BIM Server: Bimserver9 - BIM Server 20/17064 Geocon Reid/17064 General DA PRINT DATE: 15.05.2018

0 M 10 M



Whilst we endeavour to ensure the contents of these plans are correct at the time of printing, the information they contain is to be used as a guide only. Furnishings and floor coverings are for illustrative purposes only, are not shown to scale nor included in the stated price (unless expressly included). The columns shown may vary in diameter throughout the Building. All areas are provided in accordance with the Method of Measurement for Residential Property provided by the Property Council of Australia. The plans were completed prior to the completion of final design, engineering and construction of the Building, therefore design, engineering, dimensions, fittings, finishes and specifications are subject to change without notice in accordance with the provisions of the Contract of Sale.

# OWN THE CITY

## METROPOL

AINSLIE AVENUE

701

702

726

725

724

704

705

706

731

722

730

729

728

727

718

717

707

708

709

710

711

713

714

716

715

COOYONG STREET

KOOGARAH LANE

DWG NO	DWG TITLE	REVISION	DATE
MK1007	LEVEL 7 MKT FLOOR PLAN	REV. 02	14.05.2018

BIM Server: Blimserver9 - BIM Server 20/17064 Geocon Reid/17064 General DA PRINT DATE: 15.05.2018

0 M 10 M



Whilst we endeavour to ensure the contents of these plans are correct at the time of printing, the information they contain is to be used as a guide only. Furnishings and floor coverings are for illustrative purposes only, are not shown to scale nor included in the stated price (unless expressly included). The columns shown may vary in diameter throughout the Building. All areas are provided in accordance with the Method of Measurement for Residential Property provided by the Property Council of Australia. The plans were completed prior to the completion of final design, engineering and construction of the Building, therefore design, engineering, dimensions, fittings, finishes and specifications are subject to change without notice in accordance with the provisions of the Contract of Sale.



# OWN THE CITY

## METROPOL

AINSLIE AVENUE

801

802

803

822

821

820

804

805

806

807

809

810

812

813

819

818

817

RESIDENTS  
PENTHOUSE

815

814

COOYONG STREET

KOOGARAH LANE

DWG NO

MK1008

DWG TITLE  
LEVEL 8 MKT  
FLOOR PLAN

REVISION  
REV. 02

DATE  
14.05.2018

BIM Server: Bimserver9 - BIM Server 20/17064 Geocon Reid/17064 General DA PRINT DATE: 14.05.2018

0 M 10 M



Whilst we endeavour to ensure the contents of these plans are correct at the time of printing, the information they contain is to be used as a guide only. Furnishings and floor coverings are for illustrative purposes only, are not shown to scale nor included in the stated price (unless expressly included). The columns shown may vary in diameter throughout the Building. All areas are provided in accordance with the Method of Measurement for Residential Property provided by the Property Council of Australia. The plans were completed prior to the completion of final design, engineering and construction of the Building, therefore design, engineering, dimensions, fittings, finishes and specifications are subject to change without notice in accordance with the provisions of the Contract of Sale.



# OWN THE CITY

## METROPOL

AINSLIE AVENUE

901

902

903

907

906

905

904

COOYONG STREET

819

818

817

805

806

807

809

KOOGARAH LANE

RESIDENTS  
ROOF TERRACE

DWG NO

MK1009

DWG TITLE  
LEVEL 9 MKT  
FLOOR PLAN

REVISION  
REV. 02

DATE  
14.05.2018

BIM Server: Bimserver9 - BIM Server 20/17064 Geocon Reid/17064 General DA PRINT DATE: 15.05.2018

0 M 10 M



Whilst we endeavour to ensure the contents of these plans are correct at the time of printing, the information they contain is to be used as a guide only. Furnishings and floor coverings are for illustrative purposes only, are not shown to scale nor included in the stated price (unless expressly included). The columns shown may vary in diameter throughout the Building. All areas are provided in accordance with the Method of Measurement for Residential Property provided by the Property Council of Australia. The plans were completed prior to the completion of final design, engineering and construction of the Building, therefore design, engineering, dimensions, fittings, finishes and specifications are subject to change without notice in accordance with the provisions of the Contract of Sale.



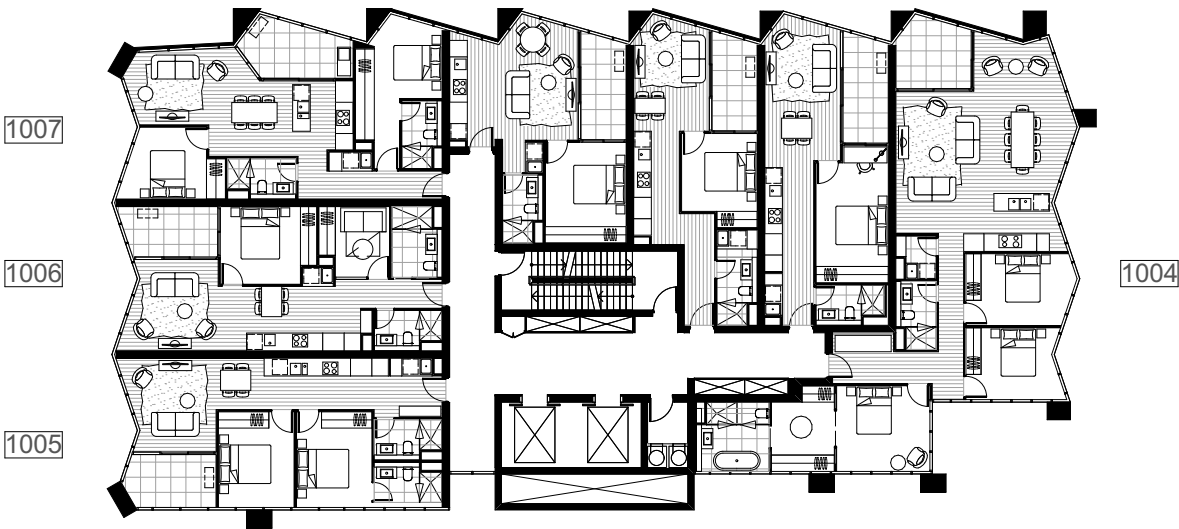


# OWN THE CITY

## METROPOL

AINSLIE AVENUE

1001 1002 1003



COOYONG STREET

KOOGARAH LANE

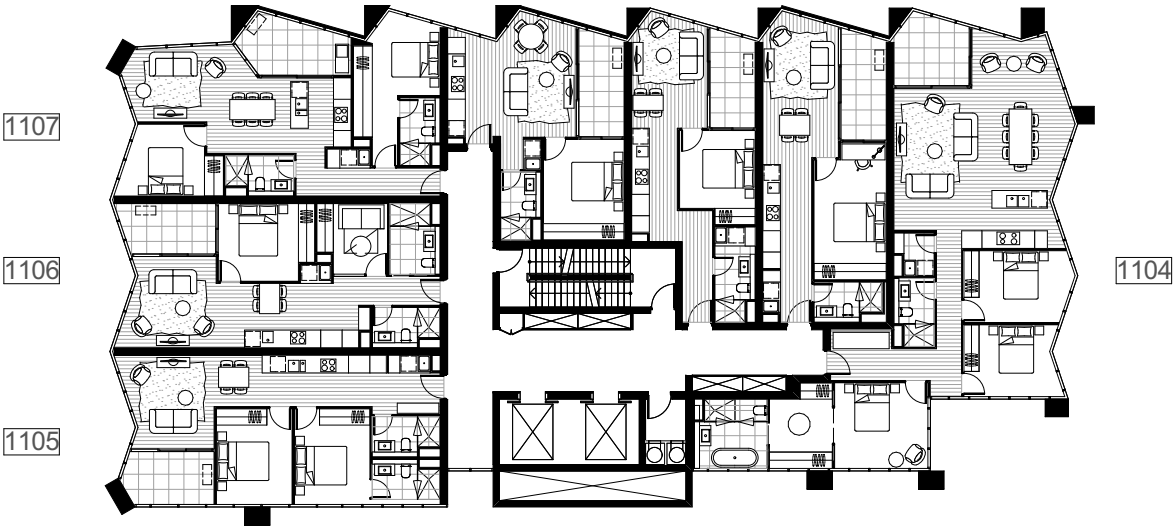


# OWN THE CITY

## METROPOL

AINSLIE AVENUE

1101 1102 1103



COOYONG STREET

KOOGARAH LANE

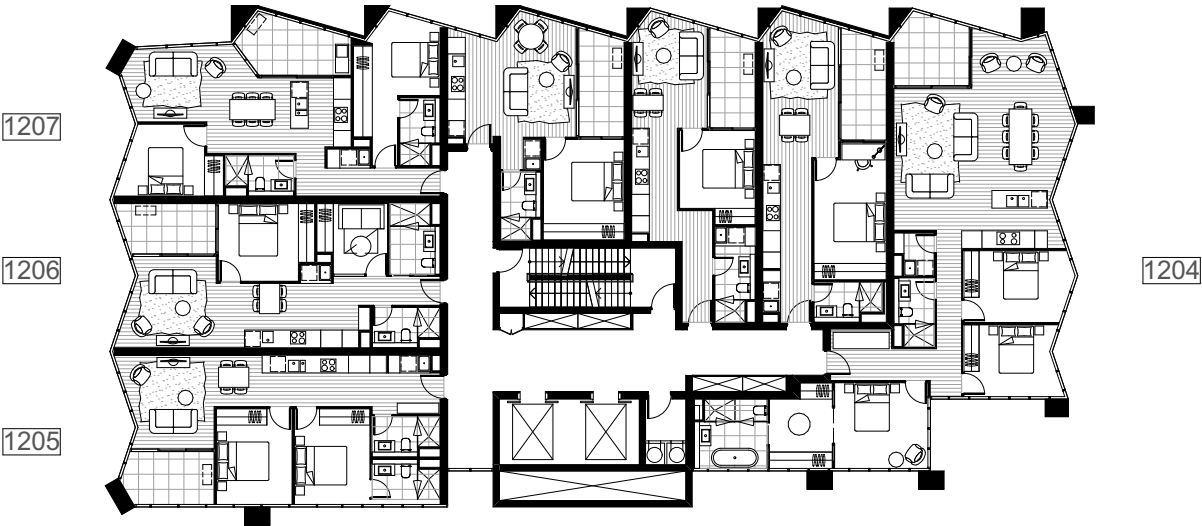


# OWN THE CITY

## METROPOL

AINSLIE AVENUE

1201 1202 1203



COOYONG STREET

KOOGARAH LANE

